



Tool Configuration / Specifications

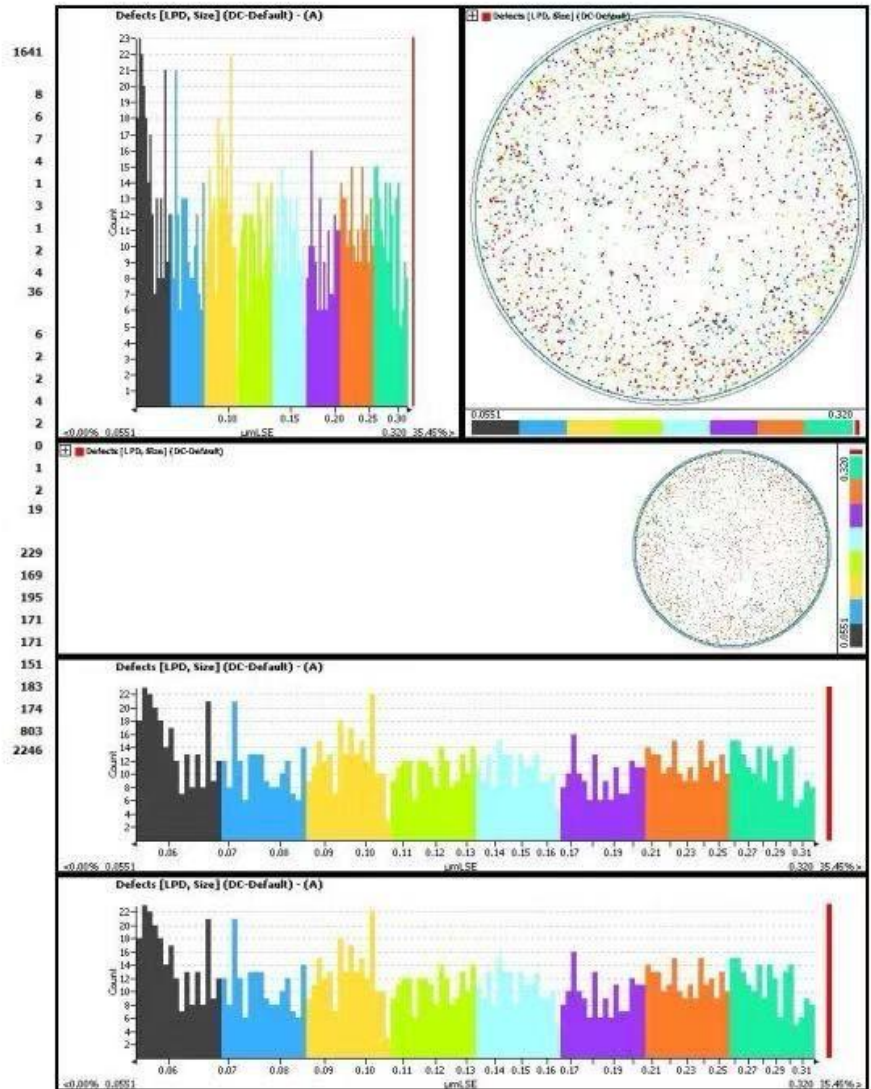
	High Sensitivity Inspect Mode	1		
	Std Throughput Inspect mode	1		
	*20 Degree	1		
	*40 Degree	1		
	*Rough Films	1		
	NGS Desktop Software Package	1		
	-Host ID will be required during software installation			
	4 Color Light Tower (RYGB)	1		
	Ion Shower for Phoenix Dual	1		
	12" PSL 0.04μm (40nm)	1		
	12" PSL 0.06μm (60nm)	1		
	12" PSL 0.083μm (83nm)	1		
	12" PSL 0.102μm (102nm)	1		
	12" PSL 0.155μm (155nm)	1		
	300mm XY Calibration Wafer	1		
	Dryer for COE	1		

Browse our site at www.moov.co

The information contained in this data sheet is, to our knowledge, accurate. We do not warrant the completeness or accuracy of the information contained herein. Any offer by you to purchase the equipment described in this data sheet shall be subject to the terms and conditions of sale.

Tool Configuration / Specifications

Counters			
Default Counter:			
DC-Default Removed LPD Size			
1	0.0557	-	0.0636
2	0.0636	-	0.0727
3	0.0727	-	0.0830
4	0.0830	-	0.0949
5	0.0949	-	0.1084
6	0.1084	-	0.1238
7	0.1238	-	0.1415
8	0.1415	-	0.1616
	Saturated	-	
Total			
DC-Default Common LPD Size			
1	0.0563	-	0.0675
2	0.0675	-	0.0809
3	0.0809	-	0.0969
4	0.0969	-	0.1162
5	0.1162	-	0.1392
6	0.1392	-	0.1669
7	0.1669	-	0.2000
8	0.2000	-	0.2397
Total			
DC-Default Added LPD Size			
1	0.0551	-	0.0687
2	0.0687	-	0.0855
3	0.0855	-	0.1066
4	0.1066	-	0.1328
5	0.1328	-	0.1654
6	0.1654	-	0.2060
7	0.2060	-	0.2566
8	0.2566	-	0.3197
	Saturated	-	
Total			



Browse our site at www.moov.co

The information contained in this data sheet is, to our knowledge, accurate. We do not warrant the completeness or accuracy of the information contained herein. Any offer by you to purchase the equipment described in this data sheet shall be subject to the terms and conditions of sale.



Tool Configuration / Specifications

Browse our site at www.moov.co

The information contained in this data sheet is, to our knowledge, accurate. We do not warrant the completeness or accuracy of the information contained herein. Any offer by you to purchase the equipment described in this data sheet shall be subject to the terms and conditions of sale.