

Wiring

Item	Subject	Description	Check	Specification
C1	Line power/frequency			~230 VAC / 50 Hz
C2	Line voltage fluctuations			+/-10%
C3	Power capacity			6,0 kVa
C4	Power consumption			4,5 kVa
C5	Main connector			IEC309, 32A, 3-pol (blue)
C6	Cable (length, diameter)			10m, 3-wire, 6 mm ²
C7	Grounding			< 100 Ohms

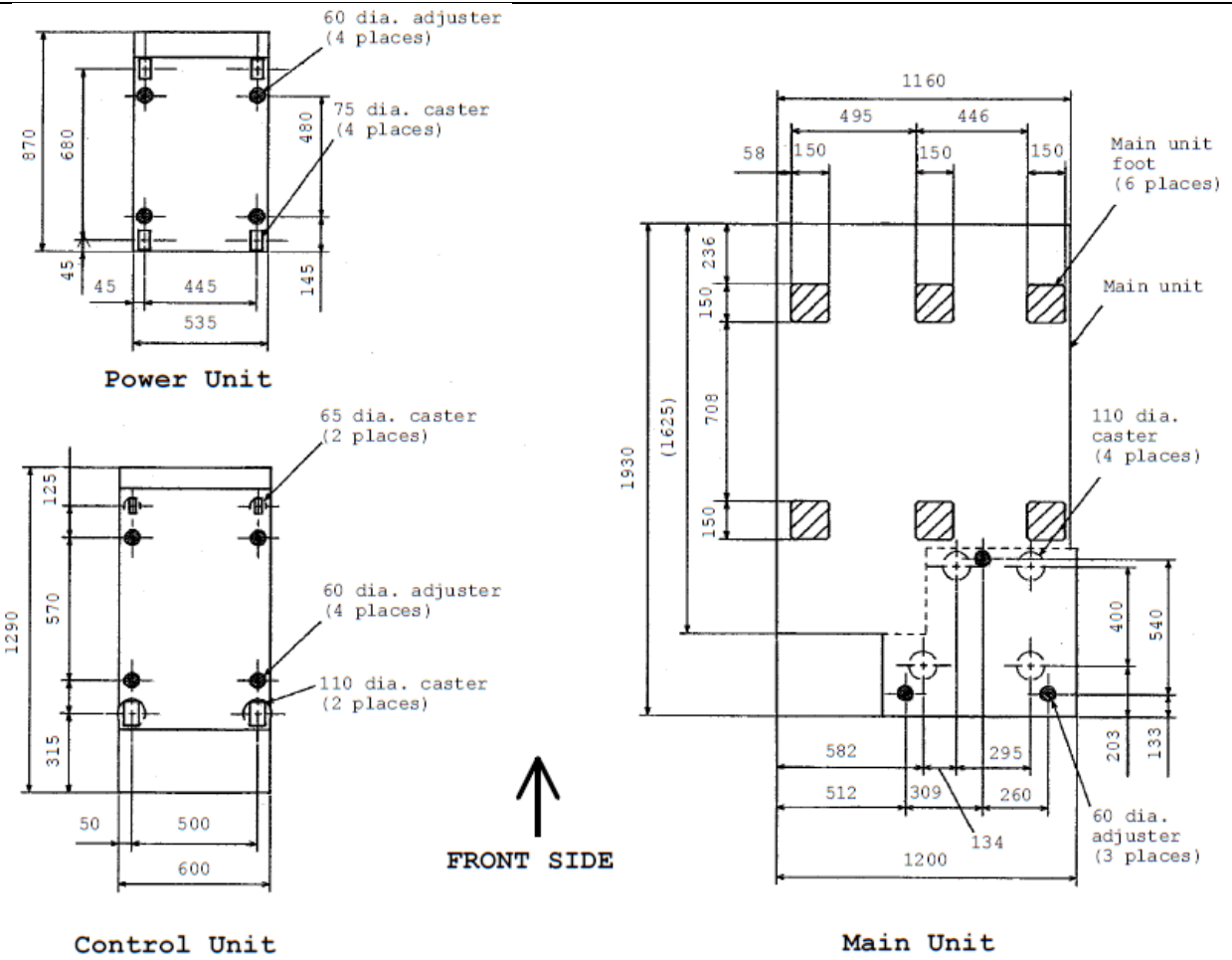
Facilities

Item	Subject	Description	Check	Specification
D1	Compressed Air			600 to 880 kPa
D2	Nitrogen supply pressure			200 to 680 kPa
D3	Process vacuum pressure			1.3 to 21.3 kPa
D4	Pre vacuum pump exhaust			6 m ³ /min

Installation Layout

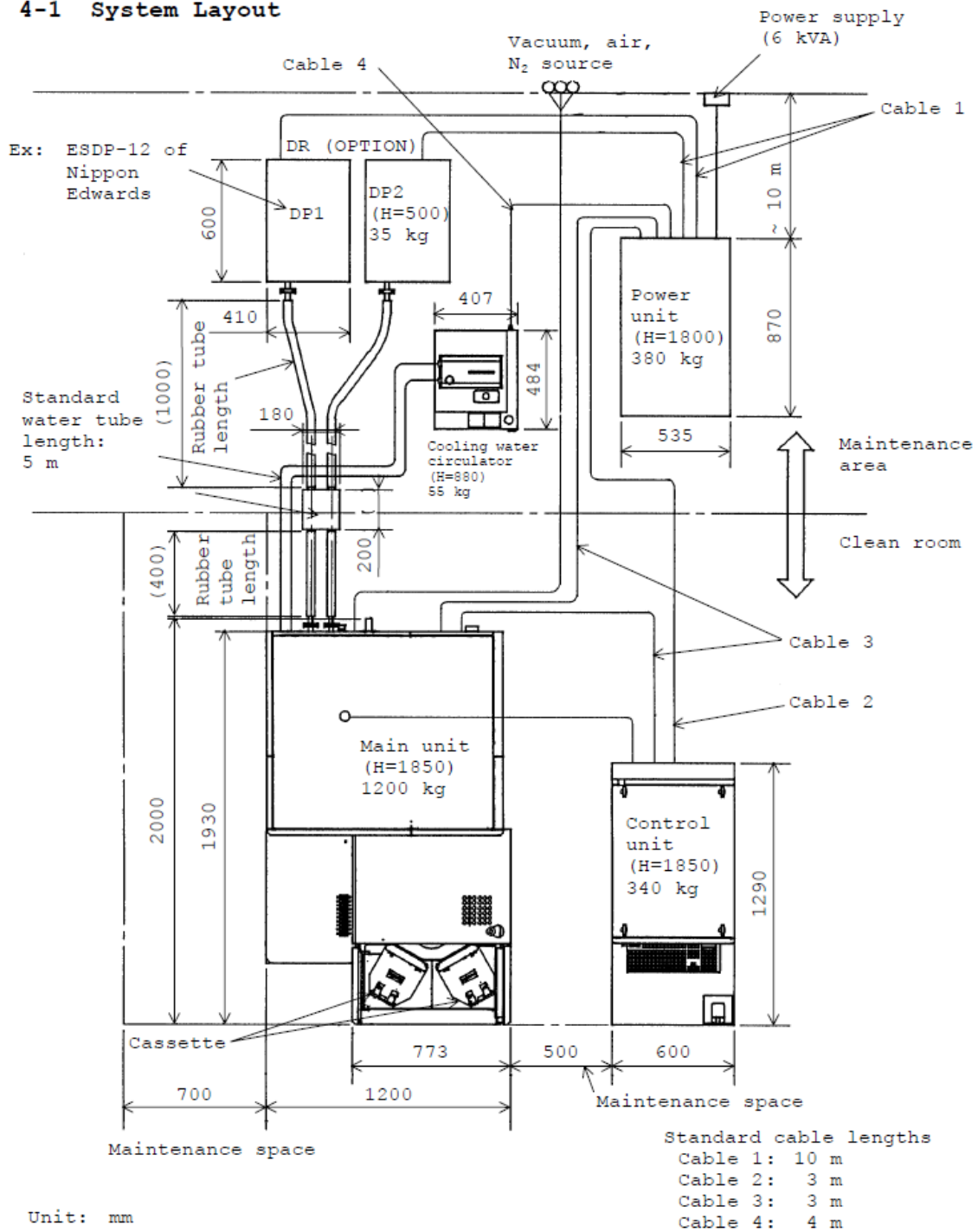
Item	Physical Dimensions
Column unit	1200 (W) x 1623 (D) x 1850 (H) mm; 1200 kg
Wafer handler unit	773 (W) x ca.700 (D) x ca.1000 (H) mm; ca.300 kg
Display unit	600 (W) x 1290 (D) x 1850 (H) mm; S-9200/S-9220: 320/340 kg
Power supply unit	535 (W) x 870 (D) x 1800 (H) mm; S-9200/S-9220: 300/380 kg
Standard transformer	420 (W) x 420 (D) x 500 (H) mm; 85 kg
Standard pump Edwards XDS35i	333 (W) x 467 (D) x 396 (H) mm; 48 kg (2 units)
Standard chiller HTE600 LG	360 (W) x 590 (D) x 470 (H) mm; 51 kg
Standard compressor [option]	460 (W) x 490 (D) x 570 (H) mm; 30 kg
<i>Required space for maintenance</i>	<i>800 mm surrounded</i>

Footprints; S-9200 and S-9220

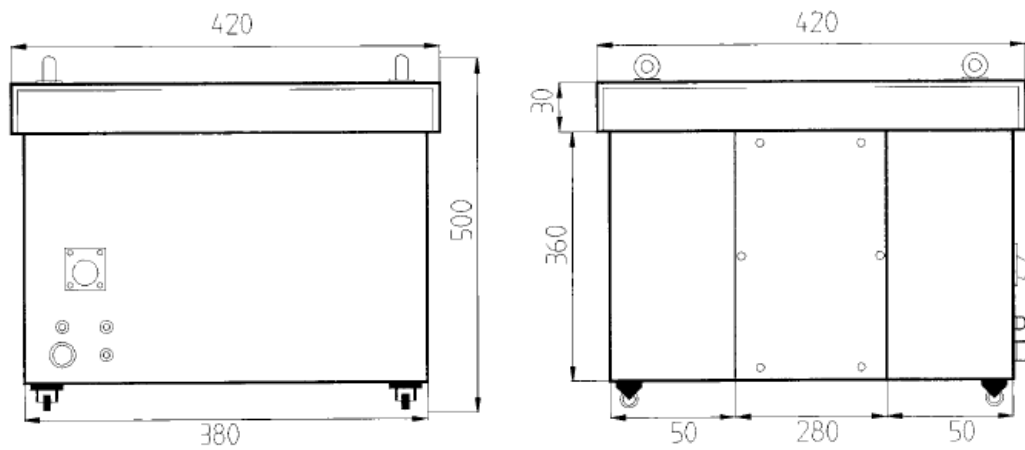


Installation layout; S-9200 and S-9220

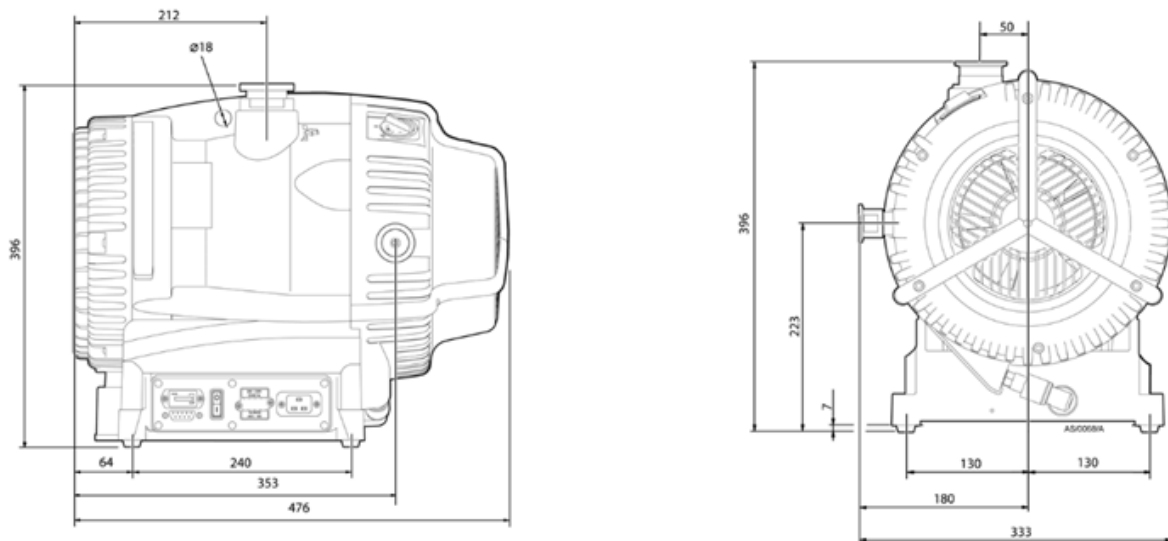
4-1 System Layout



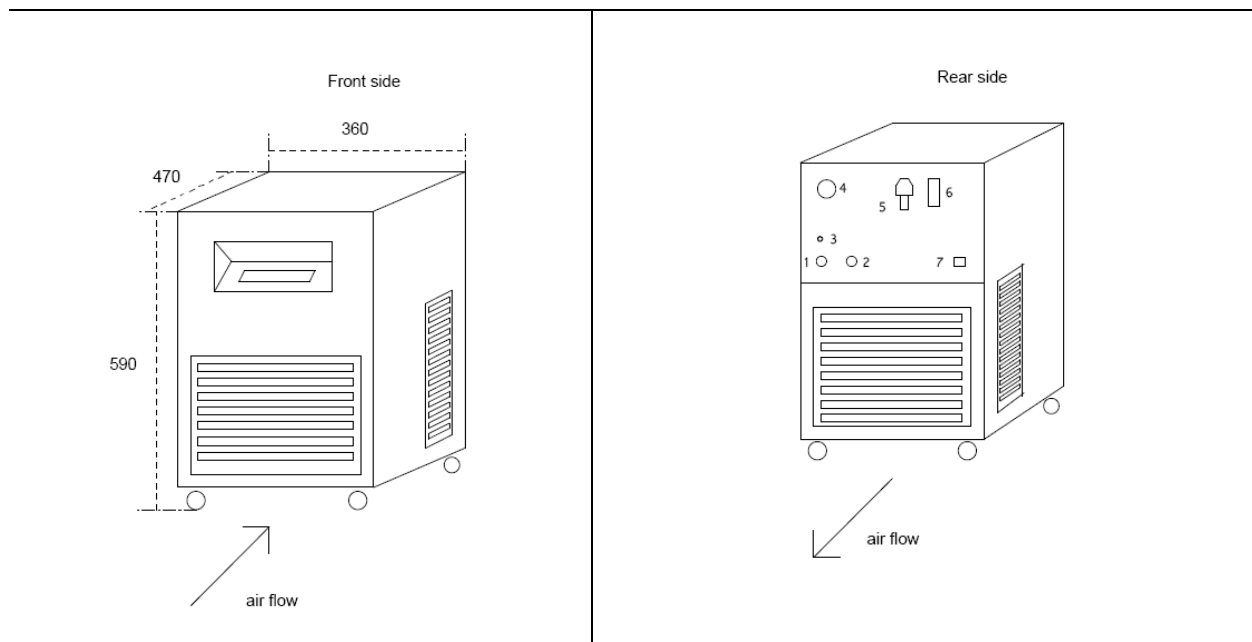
Standard transformer; Isoltra UI 210/73S



2x Standard vacuum pump; Edwards XDS 35i



Standard chiller; Van der Heijden HTE600 LG



Standard compressor (optional); MultiAir Main Air MR5-24



230 V
50 l/min
8 bar max
24 l Tankvolumen

Stray Magnetic Field

Parameters	AC magnetic field (effectiv)		DC field fluctuation (p-p)	
	Horizontal	Vertical	Horizontal	Vertical
Accelerating voltage: 1 kV Magnification: 40 kX	300 nT	300 nT	100 nT	100 nT

Parameters	DC field fluctuation (p-p) per time	
	Horizontal	Vertical
	100 nT/min	100 nT/min

Vibrations





S-9220

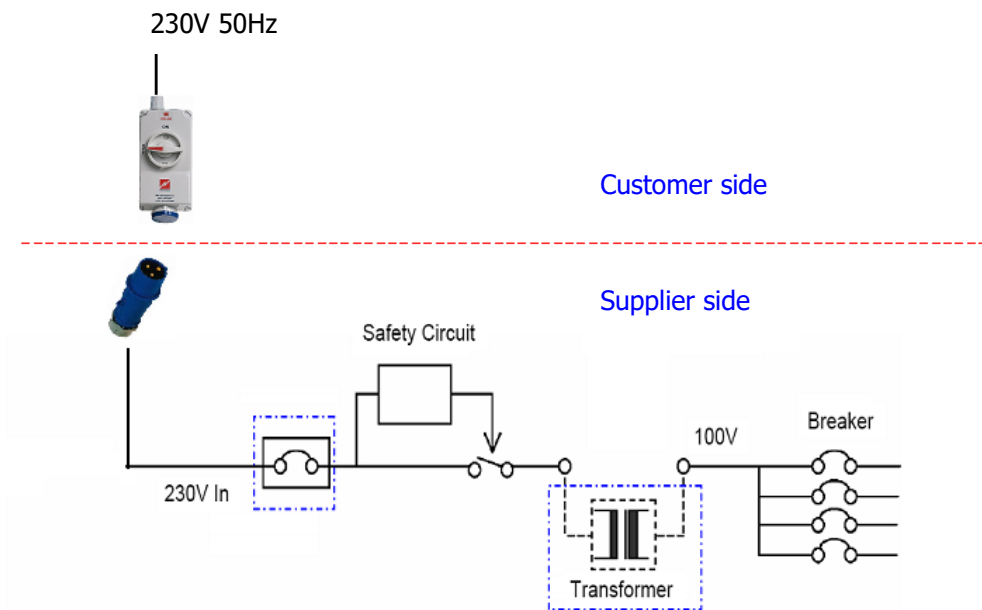
x- & y-direction		z-direction	
Frequency [Hz]	Amplitude [μm p-p]	Frequency [Hz]	Amplitude [μm p-p]
1.0	3.0	1.0	3.0
2.0	0.7	2.0	0.7
3.0	1.2	3.0	1.2
4.0	2.0	4.0	2.0
5.0	3.0	5.0	3.0
10.0	3.5	10.0	3.5

Sound Pressure

	S-9200/S-9200S	S-9220
Frequency (Hz)	Max. Noise Level	Max. Noise Level
$f \leq 150$	75 dB	75 dB

Wiring

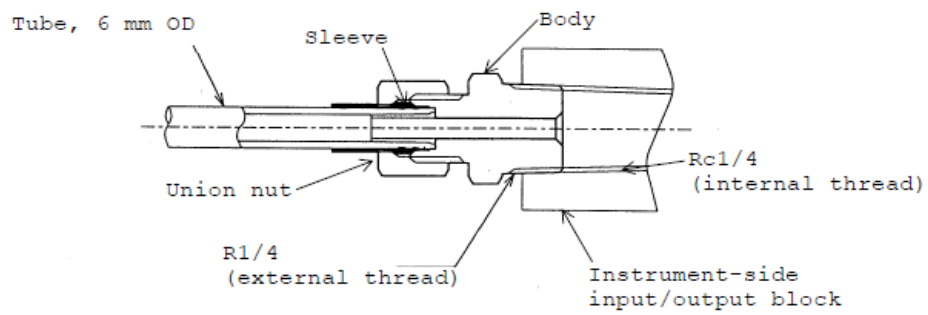
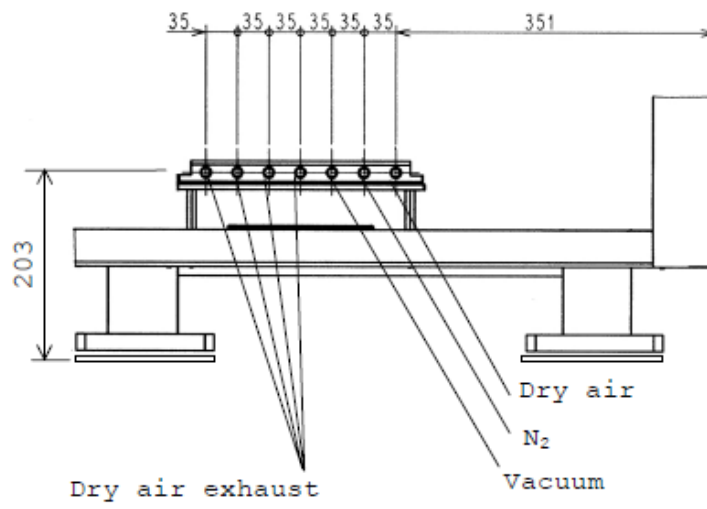
Item	Description	Image	Maker
Line Power	230 V		
Fluctuation	+/-10%		
Frequency	50 Hz		
Phase	Single		
Grounding	< 100 Ohms		
Power capacity	6 kVA		
Power consumption	4,5 kVA		
Wall outlet	CEE 230V, 32A, IP44, 2P+E	 	<p>Mennekes PN: 5696</p> <p>Order way RS order number: 490-605</p>
Cable connection	CEE plug 230V, 32A, blue, IP44 2P+E	 	



(D) Facilities

Item		Specifications
Air pressure	Pressure	600 to 880 kPa
	Wall outlet (if no optional compressor is used)	must fit for 6 mm vinyl tube
Nitrogen pressure	Pressure	200 to 680 kPa
Process vacuum pressure	Pressure	1.3 to 21.3 kPa

S-9200S / S-9220 facility connections



Standard Connector (type KFH06-02)