



MOOV

System status report

Model	DJ-1260VN-DF
Nationality	-
Client	-
Date of manufacture	2014.03.07
Serial No.	
Process	Si3N4

Machine Inspection Result:

A: Not Repairable

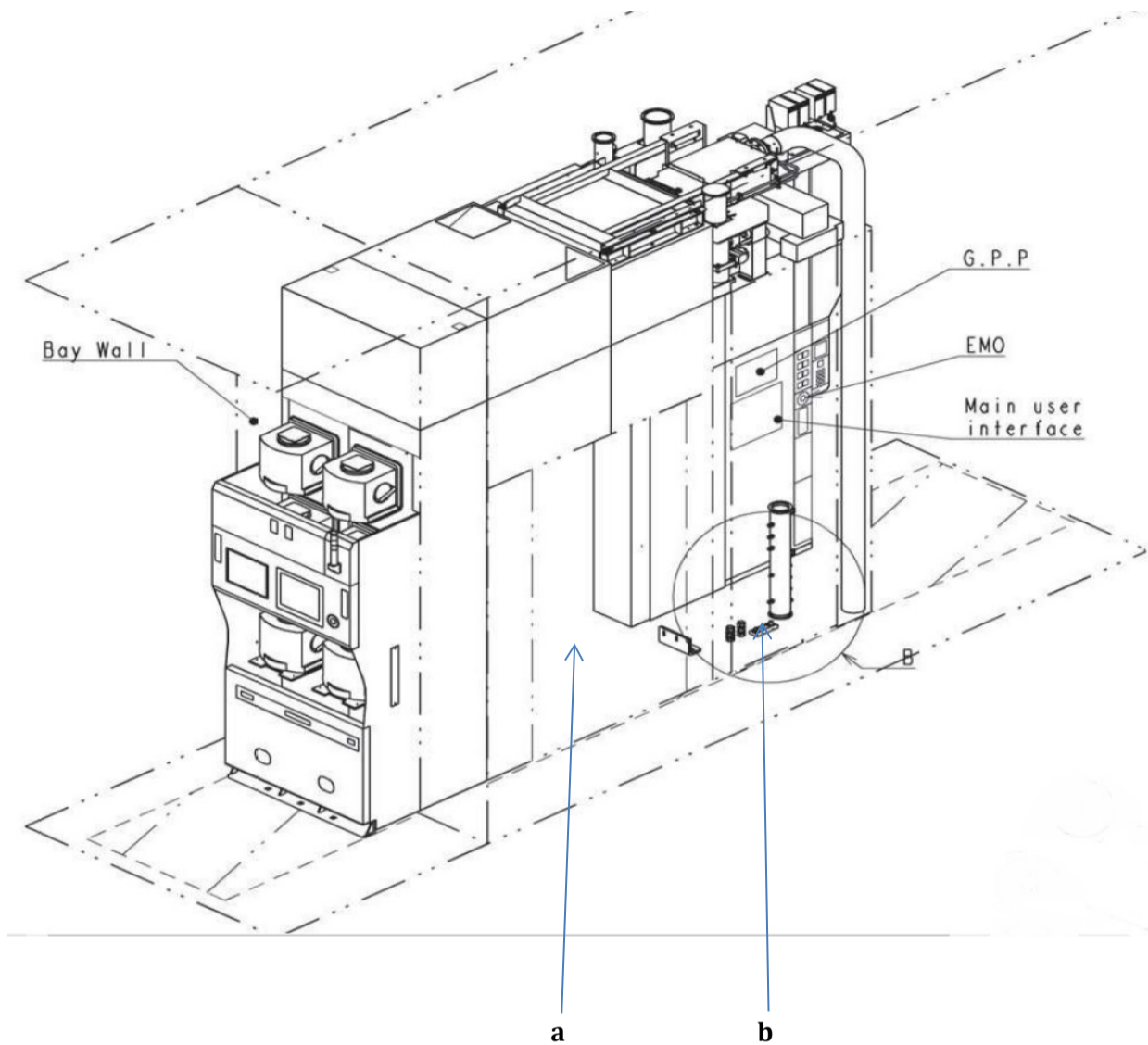
B-1: Repairable on site B-2:

Repairable outside C: Others

(power off, etc,..)

1. System Overview

The following figure illustrates the locations of the major subsystems in a typical furnace unit.



a: The furnace subsystem, which includes the following major components.

- . Automation system
- . Heater
- . Process chamber
- . Scavenger
- . Cooling water unit

b: The gas subsystem, which includes the following major components.

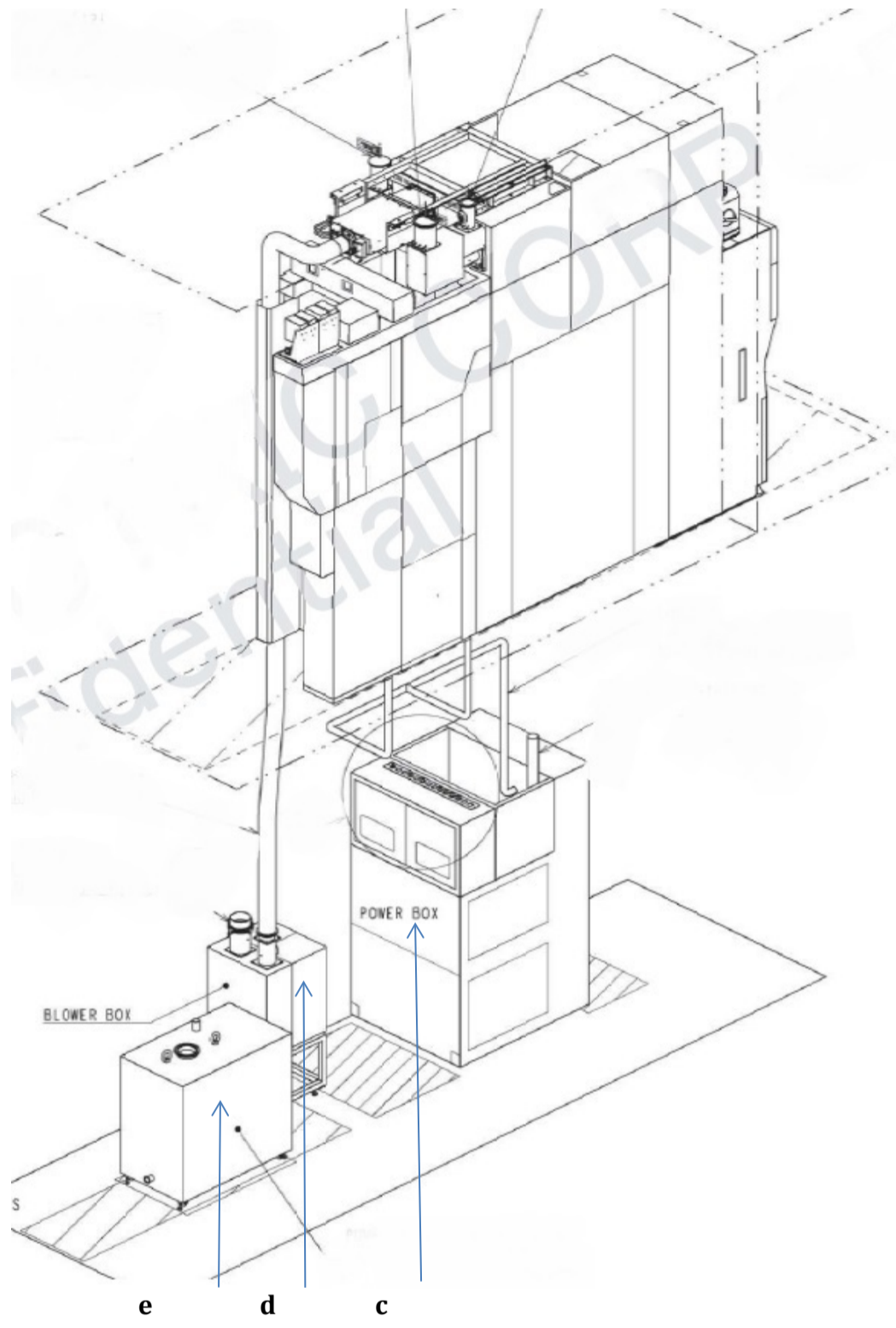
- . Gas supply unit
- . Exhaust
- . Vacuum line (for Pump systems)

c: Power box (consists of the primary power supply and the power control system)

- . Temperature controller

d: Rapid cooling unit (option for Fast Thermal Processing Systems)

e: Pump box (option for vacuum systems)

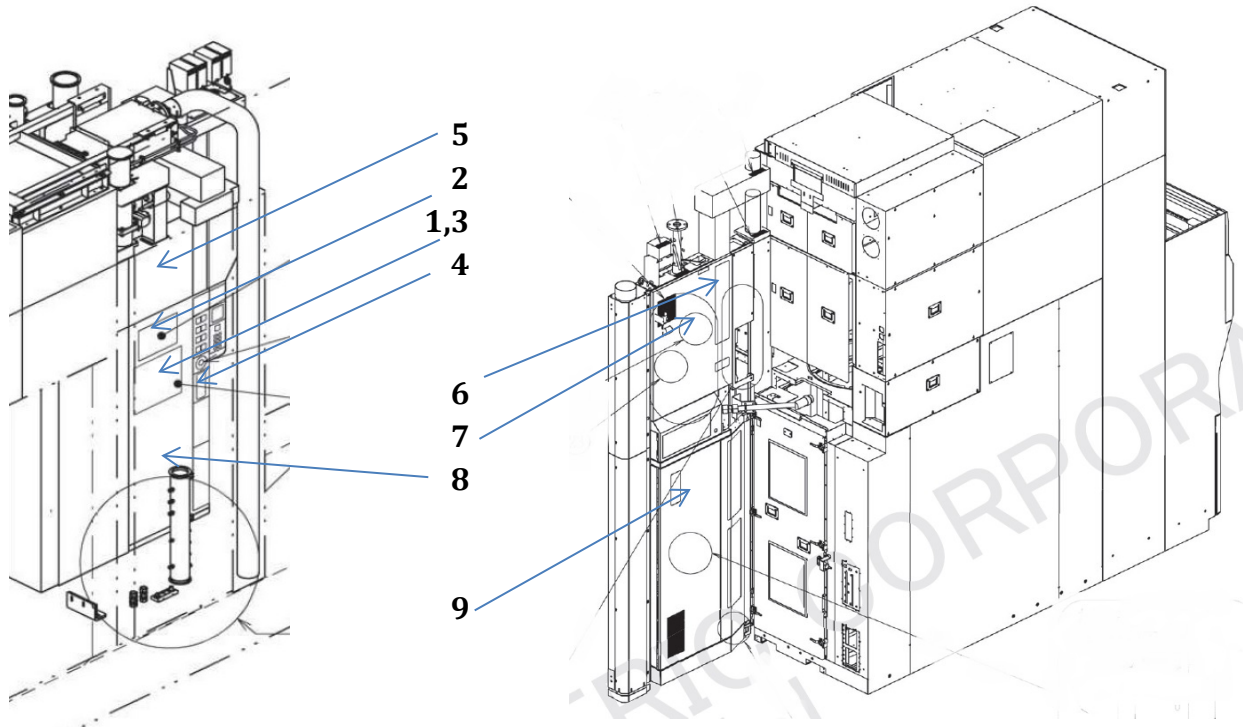


1. Furnace utility inspection sheet

Maker	KE	Software OS	CX5000
Serial No.		Equipment status	Out of Fab
Vintage	2014.03.07	Process	Si3N4

Type	Diffusion	Air valve	FUJIKIN
Heater	D4EX30455-003	MFC, MFM	HORIBA_STEC
Three phase power	3Ø AC 480V	Main	CKD
Single phase power	1Ø AC 120V	APC	
GAS	PN2 / SiH2Cl2 / NH3 / NF3		
Others	ROBO 5000		

System inspection
2) Utility Box



Check item	Status	Status issue	Broken parts	Remarks
1. CX5000	L3			
2. GFC Panel	L3			Button type
3. Operation panel	L2			
4. Data I/O	L3			USB Type
5. Gas unit(IGS)	L3			(End cap)
6. Cooling unit	L3			
7. APC Controller	L3			
8. Temperature module	L3			CQ1720
9. Exhaust box	L2			
10. Others	-			

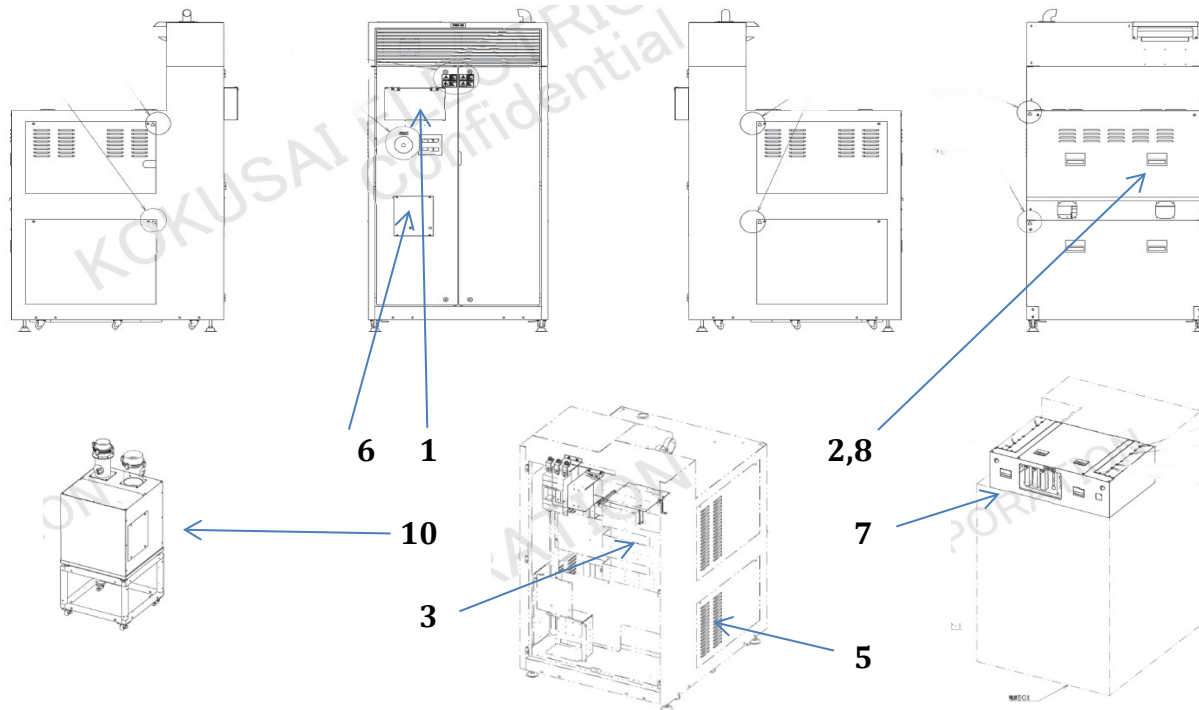
Status: L1- Need to cleaning & Parts change

L2- Cleaning

L3- Not need to fix

System inspection

3) Power box



Check item	Status	Result	Broken parts	Remarks
1. Power braker	L3			
2. Temperature controller	L3			CQ1720
3. Hardware switch	L3			
4. Transformer	L3			
5. SCR Unit	L3			
6. DN-150	L3			
7. N2 Purge unit	L3			
8. PLC control	L3			
9. Others	-			
10.RCU Unit (option)	L3			

Status: L1- Need to cleaning & Parts change

L2- Cleaning

L3- Not need to fix