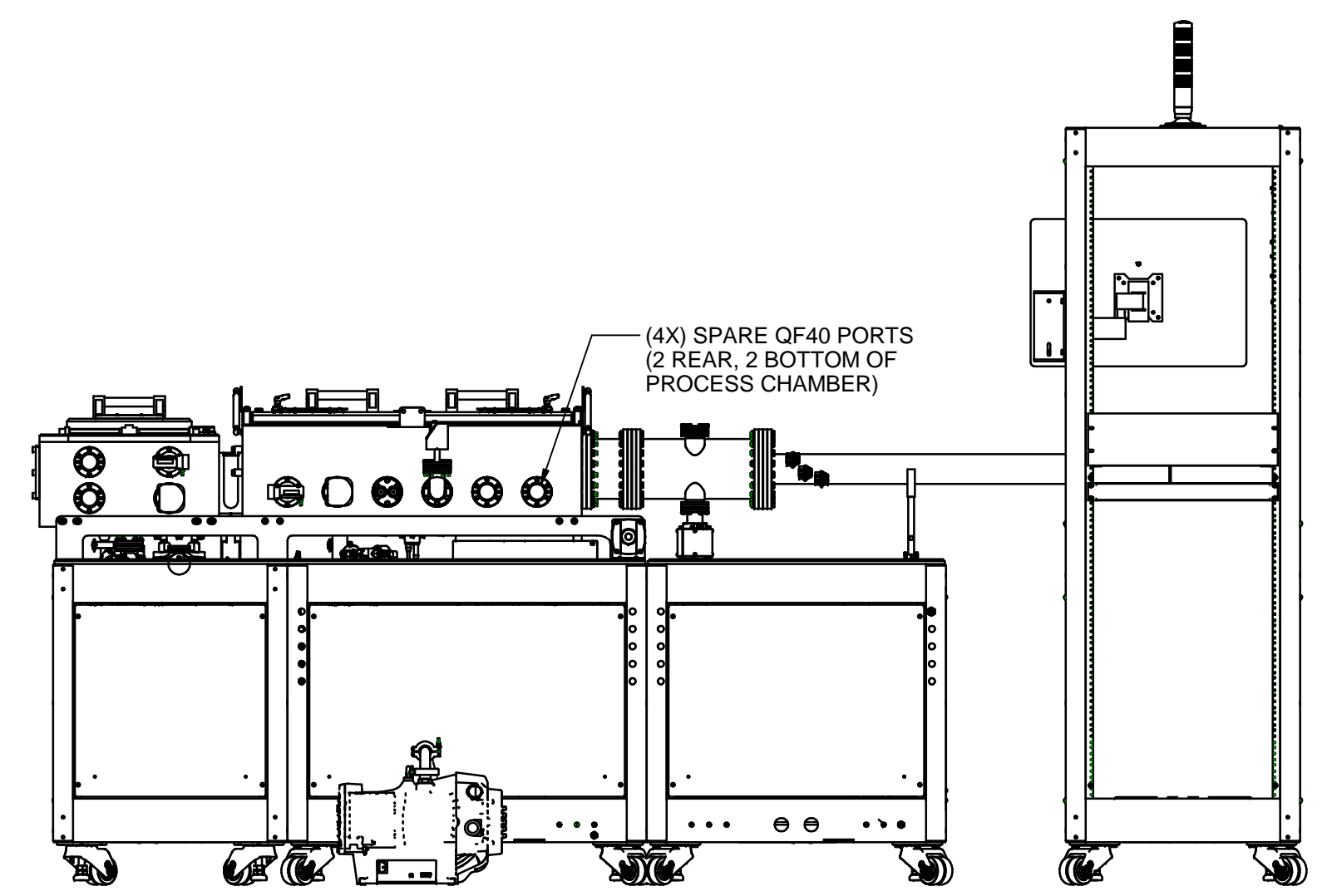
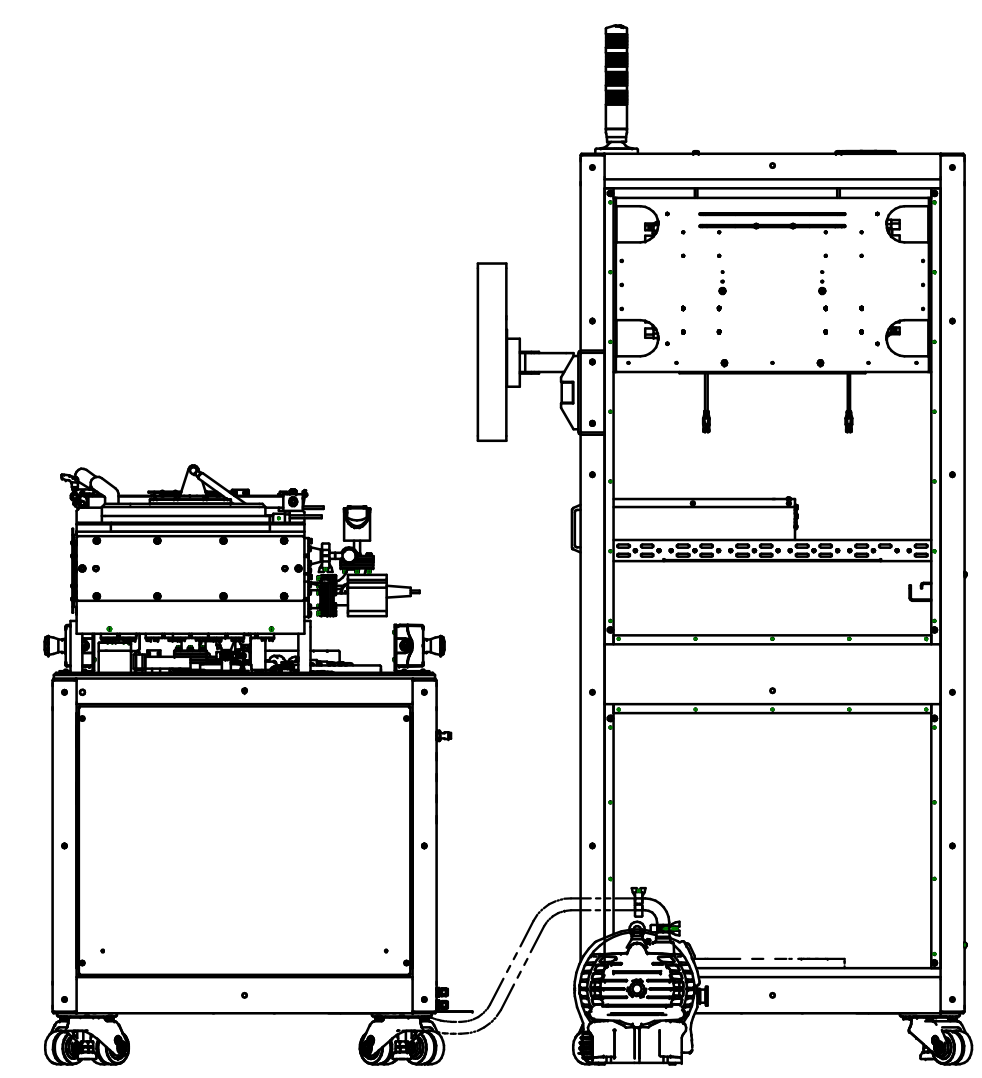
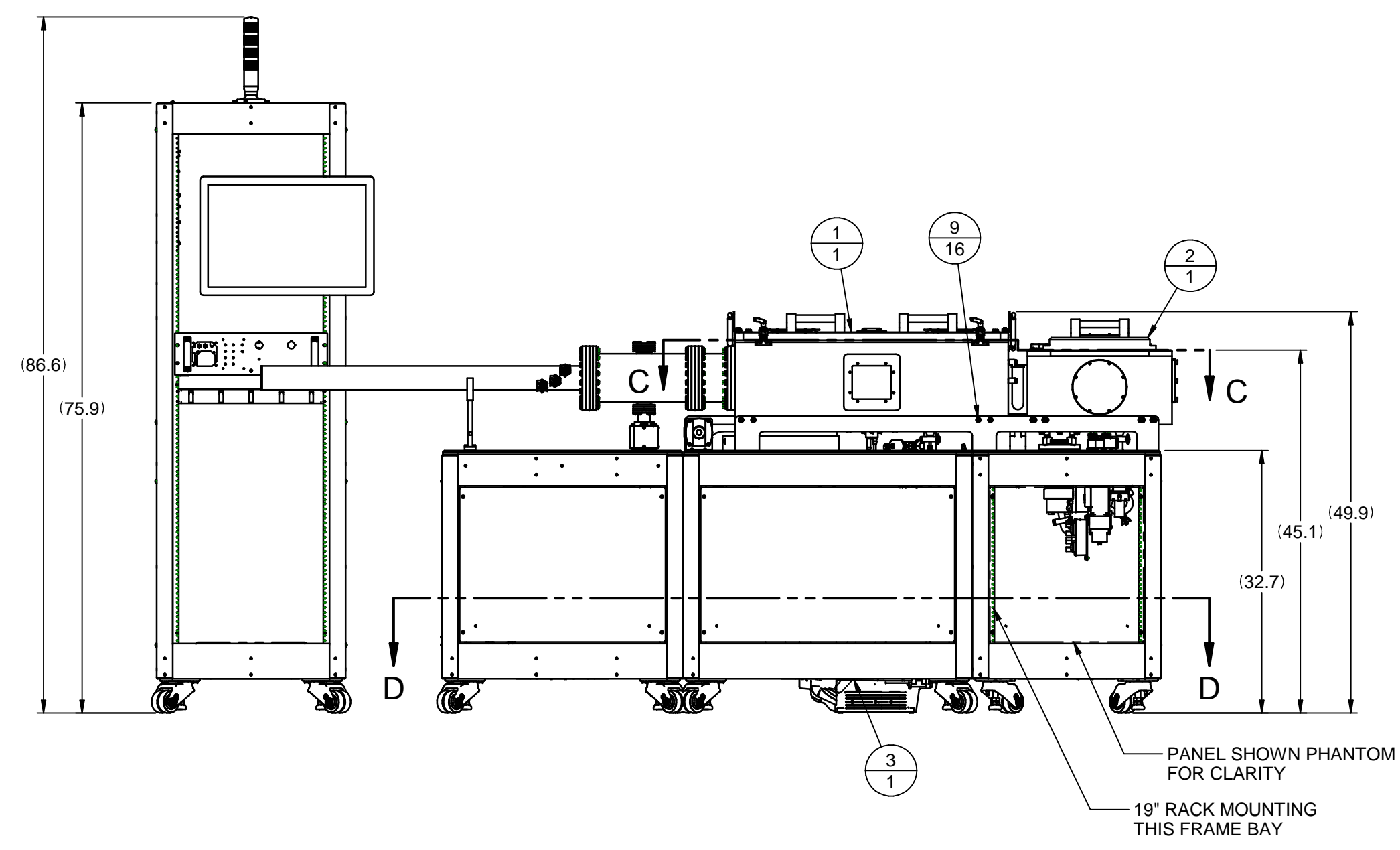
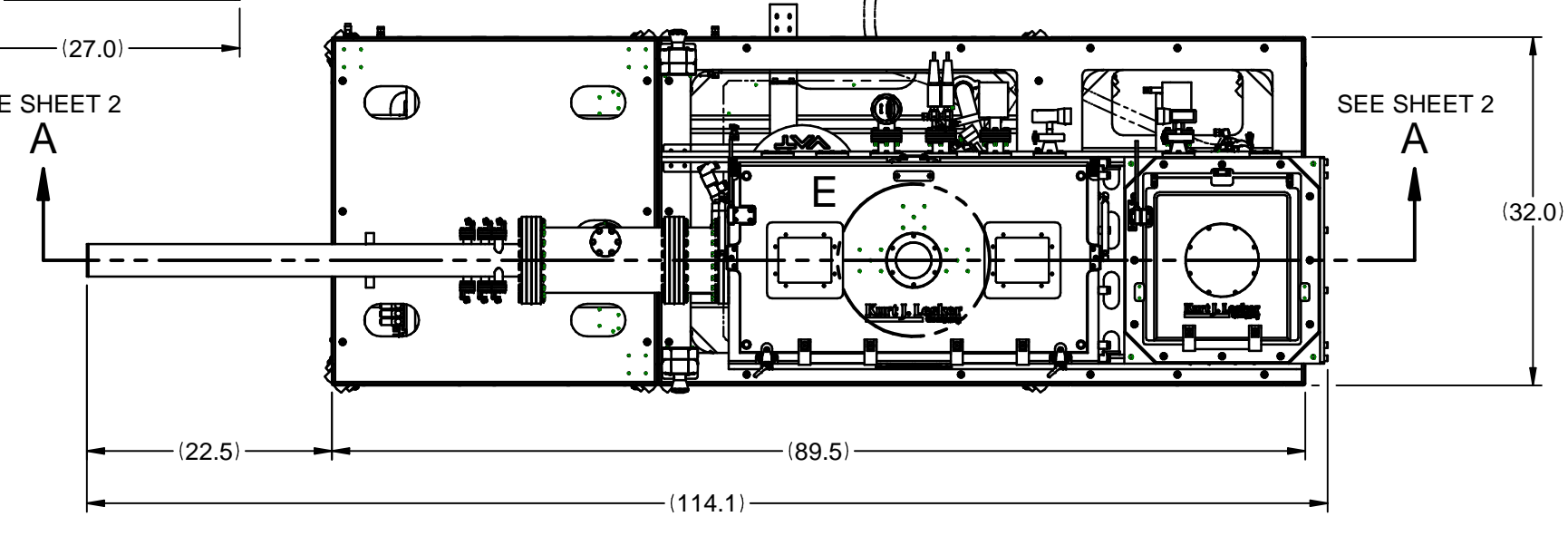
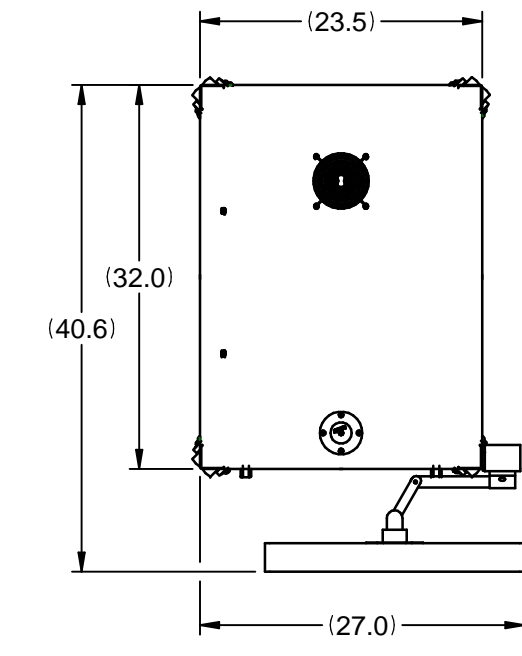
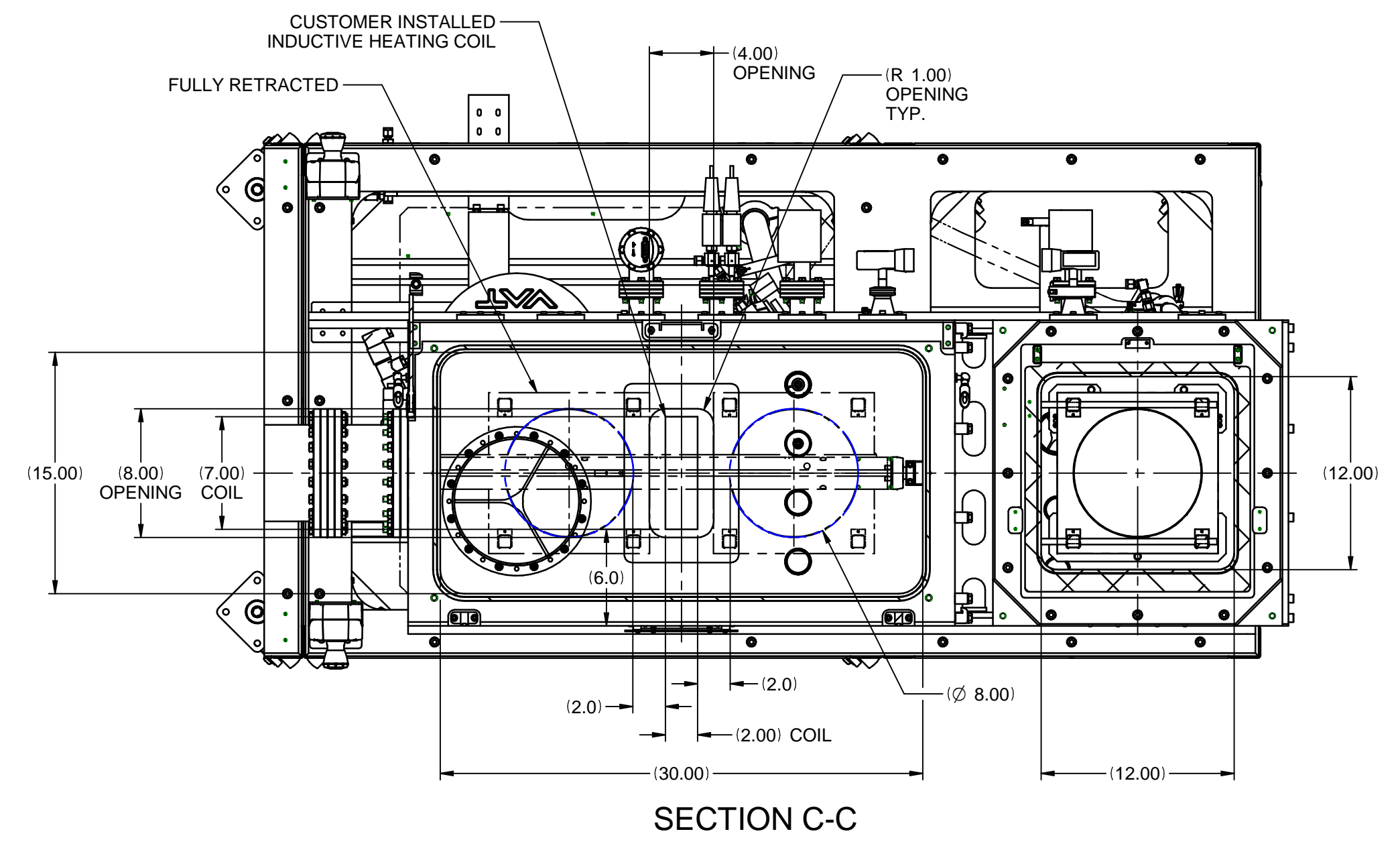
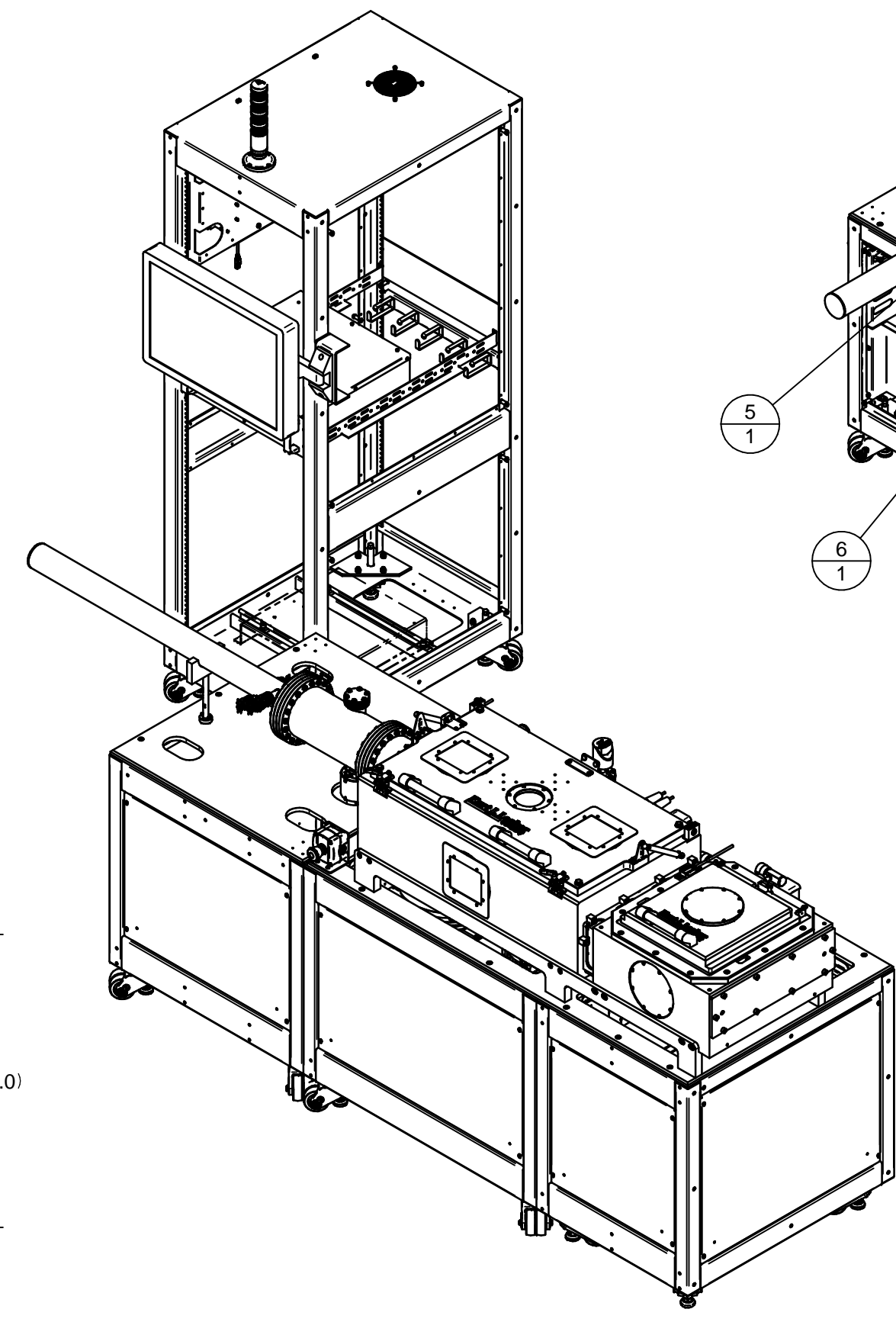
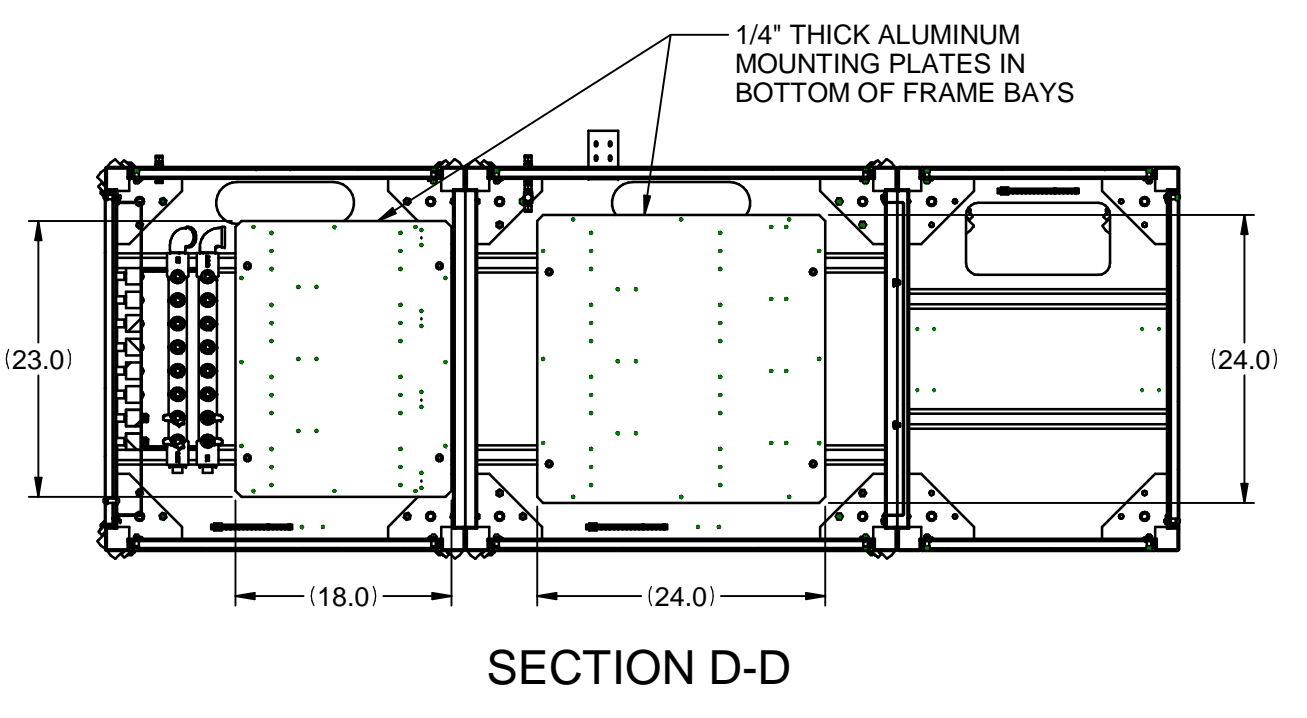
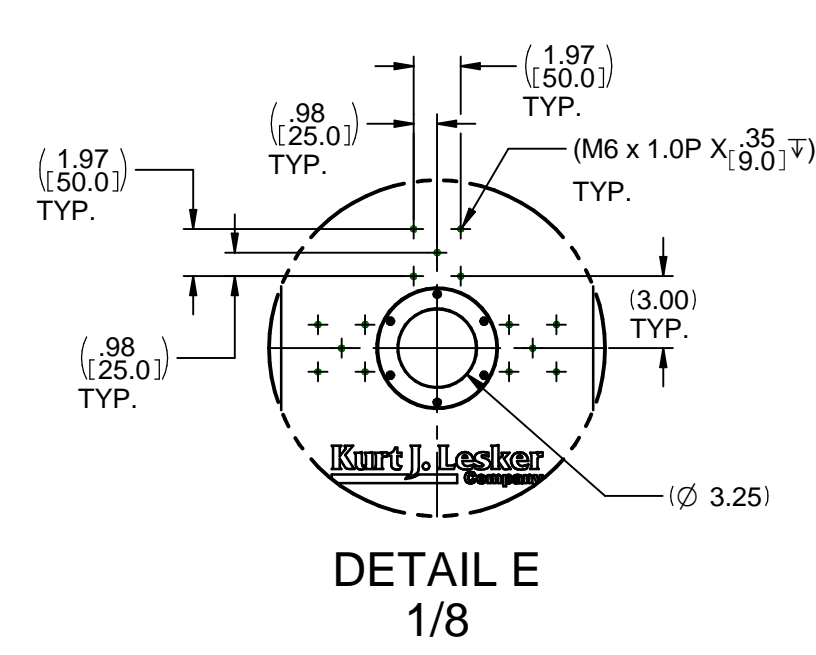


BILL OF MATERIALS					
POSN	ITEM ID	NAME	DESCRIPTION	QTY	UM
1	SKU0354125	PTN112684-0400	ANNEALING CHAMBER SYSTEM CROSS SECTION	1	EA
2	SKU0354337	PTN112684-2400	LOAD LOCK CROSS SECTION	1	EA
3	SKU0354353	PTN112684-1000	FRAME ASSEMBLY	1	EA
4	SKU0354617	PTN112684-0300	VAC SCHEM - PC 800 TURBO, 3 POS PENDULUM - LLK 80 TURBO	1	EA
5	SKU0354673	PTN112684-0200	PROCESS GAS SCHEMATIC, (1) 100 SCCM MFC, 1 TORR CAPMAN	1	EA
6	SKU0354751	PTN112684-9200	PNEU SCHEM, 3POS VLV, TURBO, LLK, (1X)MFC	1	EA
7	SKU0354756	PTN112684-0900	WATER SCHEMATIC, (2X) TURBO	1	EA
9	SKU0145547	HCHM0812-016S4P0	LIMITED QTY AVAIL SCREW, SOCKET HEAD CAP, SS, M8 X 16, AG	16	EA



- NOTES:
1. ALL DIMENSIONS ARE IN INCHES (MILLIMETERS), REFER TO TABLE 1 FOR STANDARD TOLERANCING INFORMATION.
 2. CLEANING PROCEDURE: MSW-DCP-100, LEVEL II

ECO-100685	RELEASED FOR CUSTOMER APPROVAL	SAB	03/02/2021
ECO	REVISION CATEGORY	APPROVED	DATE

SYMBOL LEGEND		UNLESS OTHERWISE SPECIFIED REFER TO DOCUMENT ENW-1201, KJLC STANDARD TOLERANCES AND MANUFACTURING PRACTICES	
REVISION		MACHINED TOLERANCES (UNLESS OTHERWISE NOTED)	FABRICATION/WELDMENT TOLERANCES (UNLESS OTHERWISE NOTED)
ITEM BALLROOM		DIMENSIONS ARE IN INCHES	
FOCAL POINT		DIMENSIONS ARE IN MILLIMETERS	
FOCAL POINT DESIGNATOR		X mm (X in)	
INSPECTION BALLROOM		MATERIAL SPECIFICATION	
WATER TRACE IDENTIFICATION		APPROX WEIGHT	
CENTER OF GRAVITY IDENTIFICATION		SHEET	

1905 Route 01
Jefferson Hill, PA
15025-9618 USA
Phone: 1-800-245-1656
www.kurtjlesker.com

Kurt J. Lesker Company
Enabling Technology for a Better World

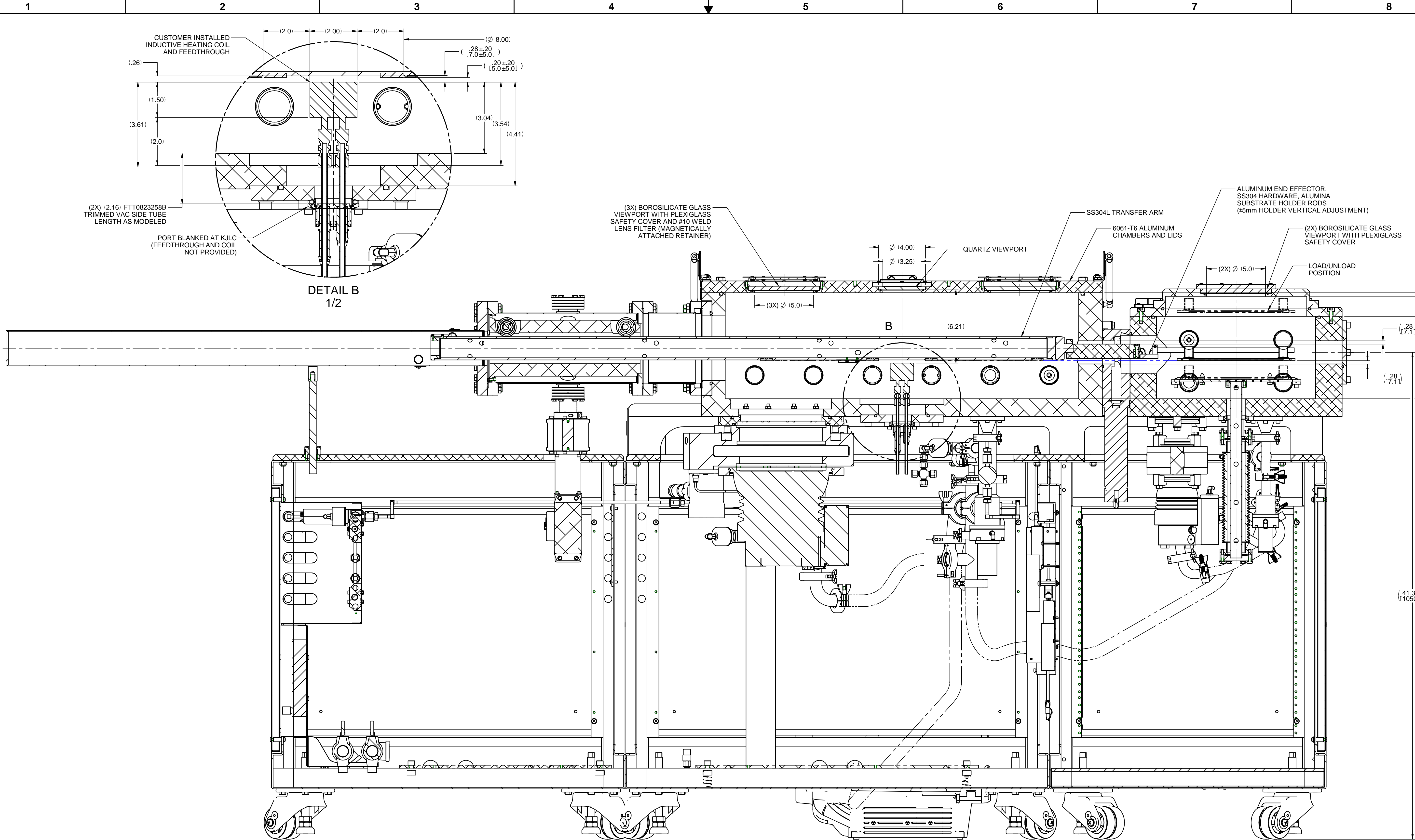
NOTE: THIS DRAWING AND ITS CONTENT IS THE CONFIDENTIAL AND PROPRIETARY INFORMATION OF KURT J. LESKER COMPANY AND CAN NOT BE DISCLOSED OR USED EXCEPT WITH THE EXPRESS WRITTEN PERMISSION OF KURT J. LESKER COMPANY.

PRODUCT NAME: PEDOTHNTDNN002 TOP LEVEL MECHANICAL ASSEMBLY
ITEM NUMBER: PTN112684-0100
SKU0354348
REV: 0

DESIGN GROUP: PED ME
DRAWN BY: DEC
DATE: 2/4/2021

APPROX WEIGHT: 1815.18 lbs
SHEET: 1 OF 2

APPROVAL REQUEST



SECTION A-A
1/4
FROM SHEET 1

DETAIL B
1/2

The attached drawings are related to your current order and are provided for your review. No work will begin until we have received your approval. Please contact your sales representative as soon as possible. Please note that changes to the drawing package (that are determined to be out of scope) may result in chargeable expenses, a delay in the project schedule, and ultimately a delayed delivery. Your approval authorizes K.I.L.C. to manufacture the components as described in the drawing package.

0-0	ECO-100685	RELEASED FOR CUSTOMER APPROVAL	SAB	03/02/2021
REV	ECO	REVISION CATEGORY	APPROVED	DATE

1925 Route 61
Jefferson Hill, PA
15025-9618 USA
Phone: 1-800-245-1656
www.lesker.com

Kurt J. Lesker Company
Enabling Technology for a Better World

Austin House
Sidney Little Road
St. Leonards-on-Sea, East Sussex
TN38 9PL UK
Phone: +44 1424 651010

NOTE: THIS DRAWING AND ITS CONTENT IS THE CONFIDENTIAL AND PROPRIETARY INFORMATION OF KURT J. LESKER COMPANY AND CAN NOT BE DISCLOSED OR USED EXCEPT WITH THE EXPRESS WRITTEN PERMISSION OF KURT J. LESKER COMPANY.

PRODUCT NAME: PEDOTHNTDNN02 TOP LEVEL MECHANICAL ASSEMBLY
ITEM NUMBER: PTN112684-0100
SKU: 0354348

SIZE: D FOR REFERENCE ONLY
SCALE: 1/16
DOCUMENT TYPE: ASSEMBLY
DESIGN GROUP: PED ME
DRAWN BY: DEC
DATE: 2/4/2021
APPROX WEIGHT: 1815.18 lbs
SHEET: 2 OF 2

SYMBOL LEGEND		UNLESS OTHERWISE SPECIFIED REFER TO DOCUMENT ENW-1201, K.I.L.C. STANDARD TOLERANCES AND MANUFACTURING PRACTICES	
△	REVISION	MACHINED TOLERANCES (UNLESS OTHERWISE NOTED)	
⊕	ITEM BALLOON	FABRICATION/WELDMENT TOLERANCES (UNLESS OTHERWISE NOTED)	
⊙	FOCAL POINT	DIMENSIONS ARE IN INCHES	
⊚	FOCAL POINT DESIGNATOR	DIMENSIONS ARE IN MILLIMETERS	
□	INSPECTION BALLOON	ANGULAR	
◇	WATER TRACE IDENTIFICATION	ANGULAR	
⊕	CENTER OF GRAVITY IDENTIFICATION	ANGULAR	