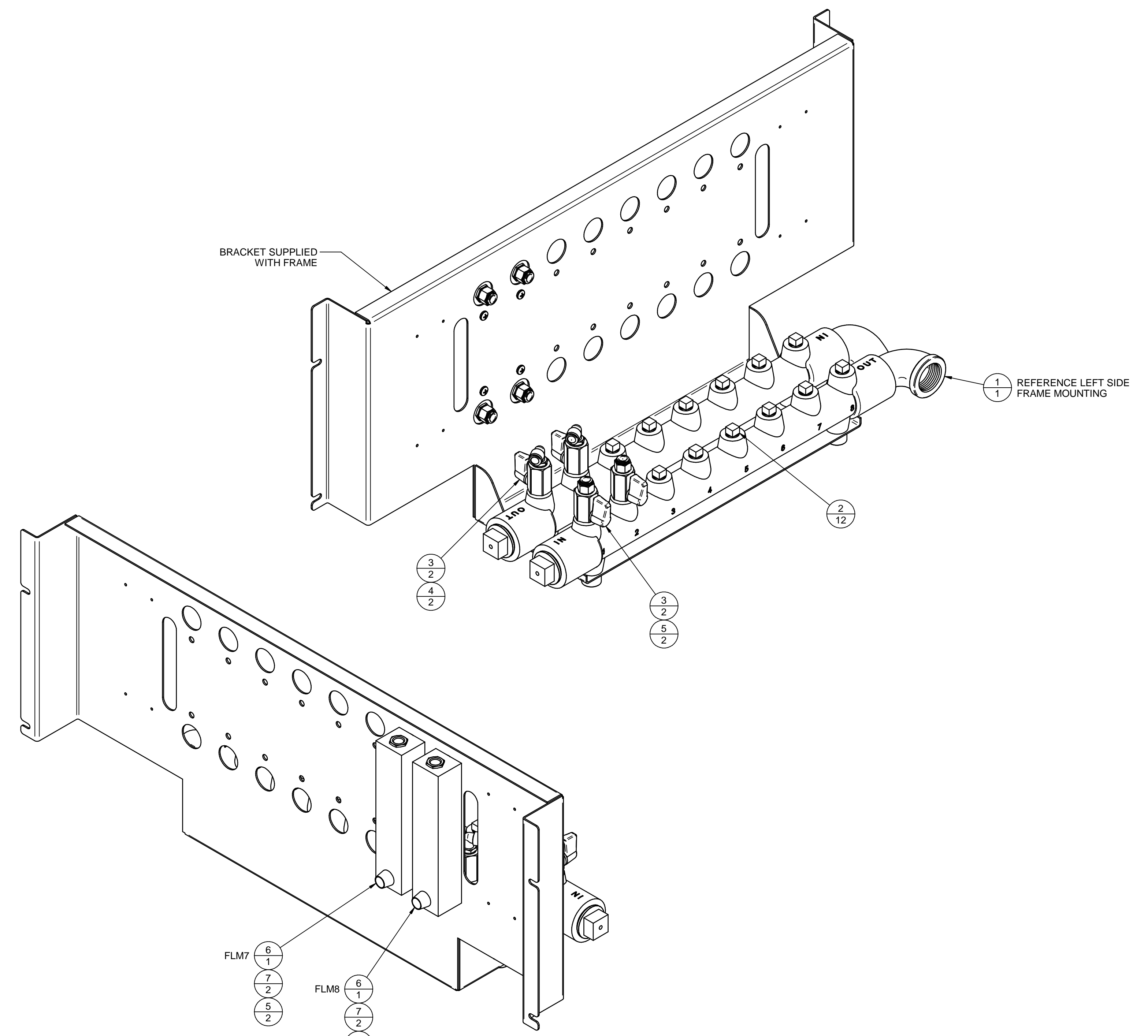
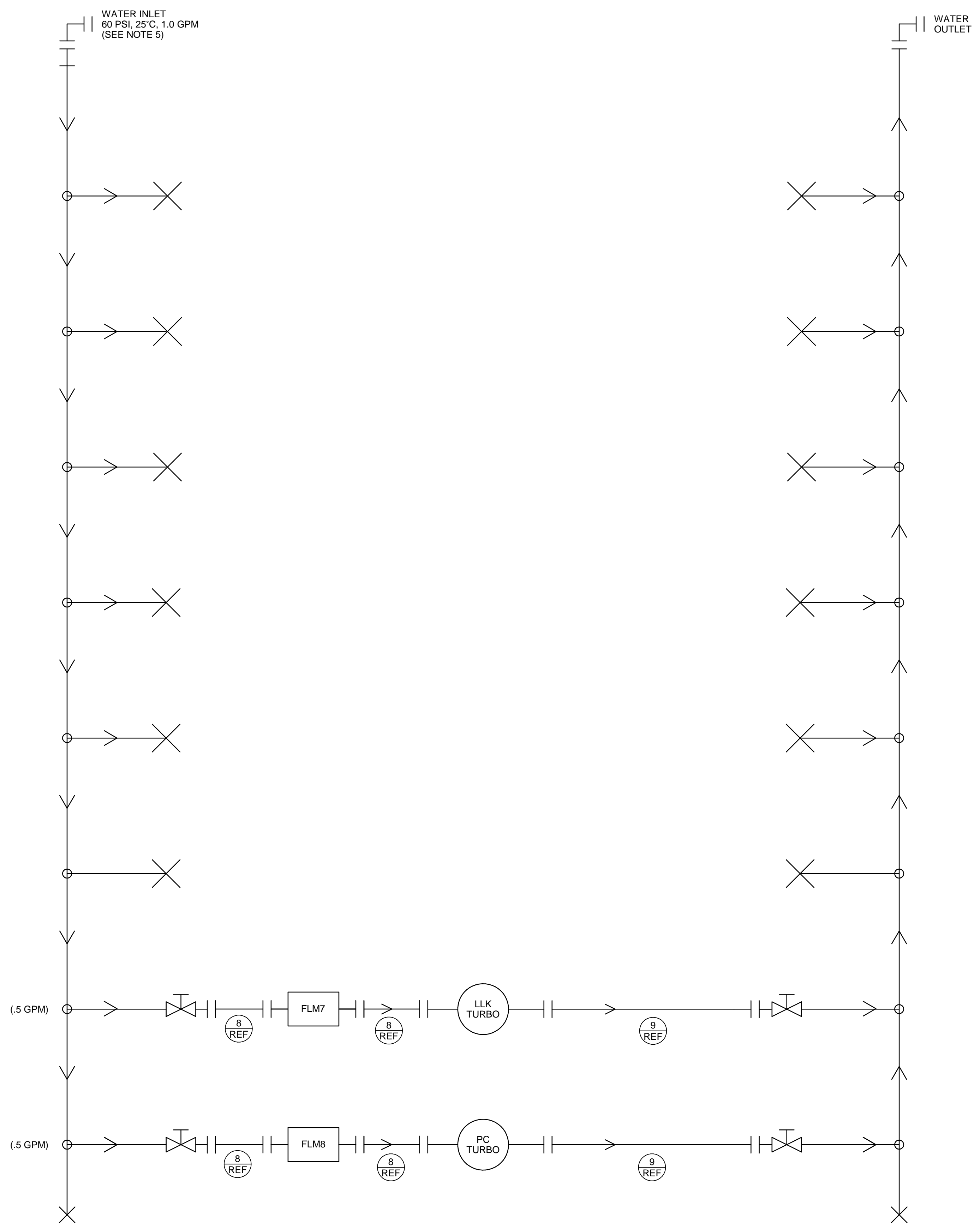


BILL OF MATERIALS					
POSN	ITEM ID	NAME	DESCRIPTION	QTY	UM
1	SKU0279435	D-A0050878	EUDF-SUPP MODULAR PLATFORM, WATER MANIFOLD ASSEMBLY	1	EA
2	SKU0101940	4429K312	SQUARE PLUG, BRASS, 1/4" MNPT	12	EA
3	SKU0102166	4912K72	BALL VALVE, BRASS CHRMP PLTD, WEDGE HANDLE, 1/4" MNPT X 1/4" FNPT	4	EA
4	SKU0336003	KQ2L09-35AS	FITTING, ELBOW, BRASS, 5/16" [8mm] TUBE X 1/4" MNPT	2	EA
5	SKU0336002	KQ2H09-35AS	FITTING, ADAPTER, BRASS, 5/16" [8mm] TUBE X 1/4" MNPT	6	EA
6	SKU0197920	VFB-85-SSV	FLOWMETER, RANGE 2-2 GPM WATER, SS VALVE	2	EA
7	SKU0137990	PHPU1032-025S4	SCREW, PAN HEAD PHILIPS, SS, 10-32 X 1/4"	4	EA
8	SKU0270845	PET008MB	TUBING, POLYETHYLENE, 8MM, BLUE	20	ft
9	SKU0270843	PET008MR	TUBING, POLYETHYLENE, 8MM, RED	20	ft



- NOTES:
- ALL DIMENSIONS ARE IN INCHES [MILLIMETERS], REFER TO TABLE 1 FOR STANDARD TOLERANCING INFORMATION.
  - CLEANING PROCEDURE: MSW-DCP-100, LEVEL I
  - DRAWING BASED ON: SKU0341349
  - USE GASKET SEALANT ON ALL THREADED CONNECTIONS.
  - CUSTOMER TO SUPPLY WATER TO THESE SPECIFICATIONS, INCLUDING A DEDICATED 50 MICRON PARTICLE FILTER.
  - REFERENCE INDIVIDUAL SYSTEM DRAWINGS FOR ITEMS NOT SUPPLIED HERE (EX. PLATEN, SOURCES, VAC, GAS, PNEU, ETC.)

SYMBOL LEGEND		UNLESS OTHERWISE SPECIFIED REFER TO DOCUMENT ENW-1201, KJLC 2D MANIFOLD TOLERANCES AND MANUFACTURING PRACTICES	
REVISION	DESCRIPTION	MACHINED TOLERANCES (UNLESS OTHERWISE NOTED)	FABRICATION/ASSEMBLY TOLERANCES (UNLESS OTHERWISE NOTED)
△	ITEM BALLOON	TABLE 1	TABLE 2
○	FOCAL POINT	RANGE	RANGE
□	FOCAL POINT DESIGNATOR	ANGULAR	ANGULAR
◇	INSPECTION BALLOON	TABLE 2	TABLE 2
◇	WATER TRACE IDENTIFICATION	ANGULAR	ANGULAR
◇	CENTER OF GRAVITY IDENTIFICATION	ANGULAR	ANGULAR

The attached drawings are related to your current order and are provided for your review. No work will begin until we have received your approval. Please contact your sales representative as soon as possible. Please note that changes to the drawing package (that are determined to be out of scope) may result in changeable expenses, a delay in the project schedule, and ultimately a delayed delivery. Your approval authorizes KJLC to manufacture the components as described in the drawing package.

1925 Route 61  
Jefferson Hill, PA  
15029-9618 USA  
Phone: 1-800-245-1656  
Web: www.lesker.com

**Kurt J. Lesker Company**  
Enabling Technology for a Better World

1505 Route 61  
Jefferson Hill, PA  
15029-9618 USA  
Phone: 414-424-6500  
TNSB (P)U, LK

NOTE: THIS DRAWING AND ITS CONTENT IS THE CONFIDENTIAL AND PROPRIETARY INFORMATION OF KURT J. LESKER COMPANY AND CAN NOT BE DISCLOSED OR USED EXCEPT WITH THE EXPRESS WRITTEN PERMISSION OF KURT J. LESKER COMPANY.

DESCRIPTION: **WATER SCHEMATIC, (2X) TURBO**

PRODUCT NAME: PTN112684-0900 ITEM NUMBER: SKU0354756 REV: 0

ECO	ECO	ENGINEERING OBJECT CHANGE	SAB	03/02/2021
REV	ECO	REVISION CATEGORY	APPROVED	DATE

SIZE: D FOR REFERENCE ONLY SCALE: NTS DOCUMENT TYPE: ASSEMBLY DESIGN GROUP: PED ME DRAWN BY: DEC DATE: 2/15/2021 APPROX WEIGHT: 15.99 lbs SHEET: 1 OF 1